

**TransNet**



Your Partners in Power



August 2020

# LV JUICE



## This Month

25 YEAR WARRANTY ON TE PORCELAIN INSULATORS

PAGE 3

NEED A SUPER STRONG PIT?

PAGE 4

THIS MONTH'S TOOL SPECIALS

PAGE 8

# FREE LIQUORICE ALLSORTS

WHILE STOCKS LAST



When you spend over \$300 (+GST) on one invoice this month



www.transnet.co.nz





# SPORTS LIGHTING

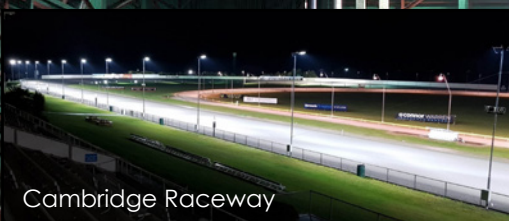
UNRIVALED EFFICACY | OUTSTANDING COOLING TECHNOLOGY & DURABILITY | REDUCED GLARE | EXCELLENT LIGHT DISTRIBUTION | SMART LIGHTING CONTROL | GREAT UNIFORMITY



Bucklands Beach Tennis Club



Gladstone Tennis Club



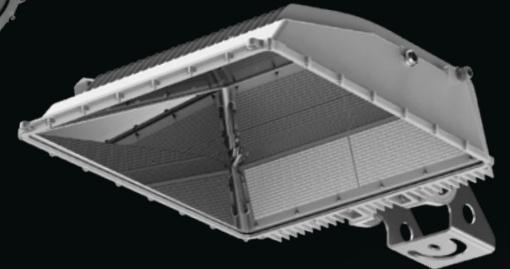
Cambridge Raceway



Northcote Tennis Club



SUFA



MAHA

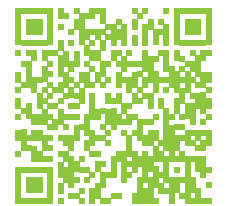
WAPA



**GigaTera**<sup>®</sup>  
beyond light

The ECOLight area and sports lighting range comes from GigaTera – world leaders in televised (UHD) LED sports lighting. These lights are constructed from quality materials and made to adhere to the highest quality requirements.

VIEW  
THE RANGE



## TRANSNET MONTHLY GIVEAWAY SUPPORTING KIWI BUSINESSES

This month's giveaway comes from a NZ company we've worked with for several years now. Foodflo International is still owned by the Cox Family who founded it in 1975, and operates from a factory in Pahiatua in the lower North Island.

With over 40 years in business their second generation leadership is committed to sustainable business growth, which is something we can relate to here at TransNet.

[www.foodflo.co.nz](http://www.foodflo.co.nz)

As a supporter of local manufacturing we only choose lollies that are made in New Zealand, so Foodflo's liquorice allsorts make a great giveaway this month.







## WHY ELSE SHOULD YOU CHOOSE TE PORCELAIN INSULATORS?

- We have excellent stock holding in our Auckland warehouse
- We can hold inventory for your usage requirements (talk to us now)
- TE Insulators (formerly Morlynn) have a long service history with more than 150 years selling to Australia and New Zealand
- The full and comprehensive range includes:
  - Voltages - low, medium, & high
  - Materials - Porcelain, Polymer (including silicone & EVA), & Glass
  - Styles - Pin, post, strain/termination, spool, shackle, guy strain, & disc
- TE Insulators meet all relevant international standards

**CHECK OUT OUR TE INSULATOR CATALOGUE TODAY**



Terms and conditions apply. To learn more about this offer contact TransNet (0800 442 182, 09 274 3340) or TE Connectivity (0800 489 261) directly.





NEED A SUPER STRONG PIT?



LIGHTER. SAFER. STRONGER.



### BULK PITS

BULK's lightweight design and reduced weight compared to concrete, polymer concrete, and many other body materials protects the safety of installers while shortening installation times. Additionally, cutting BULK body ducts in the field produces no harmful dust contaminants which could lead to installer respiratory issues.

- HDPE body for easy field alteration while eliminating water absorption & material degradation
- **Ribbed sidewall secures body into backfill soil & eliminates sidewall deflection**
- Straight wall design improves lid load strength
- Flush mounted sidewall racks & mounting studs (BULK 1-9)
- 4 lifting points & 8 multiple conduit points at each end (BULK 9)

FIND THE PIT THAT SUITS YOUR NEEDS



## CHANNELL BULK PITS & LIDS

With over 90 years of experience Channell has developed the most advanced pit and chamber technology in the world! Channell's patented designs offer safety benefits never before contemplated.



### TESTED TO THE HIGHEST STANDARDS

Safety always comes first, which is why Channell pits & lids are tested to the highest standards available in the global market.

- AS/NZ 3996:2006
  - Class B (Pathway)
  - Class C (Roadway)
- European - EN124 Class B125/C250
- AS/NZ 4586

Channell Bulk pits can be installed in roadways (as long as the correct lid variant is selected for the traffic levels) without concern.

Testing is undertaken in a specialised facility, with the following tests undertaken:

- **Vertical Centre Load Test**
  - Side Wall Load Test
  - Box Lateral Side Wall Load Test
- Test reports are available on request.



### SHIELD LIDS

- **Patented Anti-Slip tread design**
- Anti-trip cover
- Designed for "Deliberate Traffic" - slow moving vehicular applications
- Designed to meet or exceed **150kN** load
- Superior Fatigue Resistance (EST)<sup>™</sup> - SHIELD

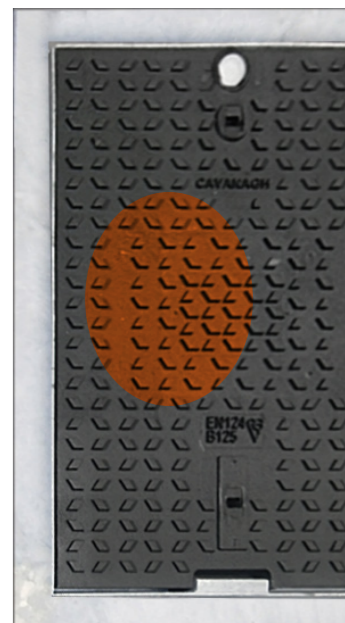
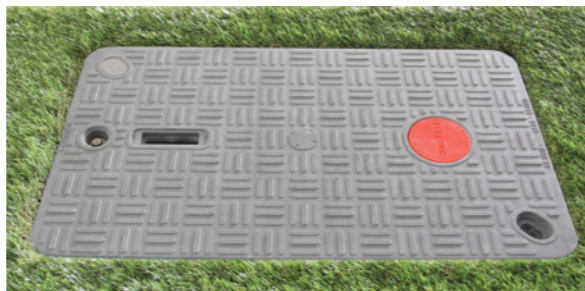
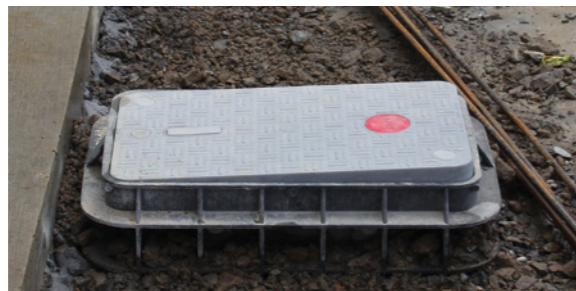
Lids exceed EST **3,000,000** cycles of design loads without failure

- Extremely durable/fire retardant/chemical resistant/UV stable/WiFi transparent
- SHIELD is stronger than concrete, polymer concrete and of similar strength to steel
- Non-seizing bolt system allows field replacement

### DUCTILE IRON LIDS

- Designed to work in "Deliberate Traffic" - carriageway applications
- Designed to meet or exceed **250kN** load (actual meets EN124 Class C250 : 250 kN)
- Endurance Stress Test (EST): Ductile Iron lids exceed **several hundred million** cycles of design loads without failure.

- **Anti Skid Tread Pattern that meets or exceeds industry standards for the cast iron industry**
- Specialised locks for high security
- Galvanized steel welded frame, Reo Steel kitsets, designed to support loads applied to Ductile Iron cover which are certified to exceed 275 kN



Ph 0800 442 182  
+64 9 274 3340

sales@transnet.co.nz

www.transnet.co.nz

All Specials and Products featured in TRANSNET JUICE are available from all good electrical wholesalers.







# APPRENTICE KITS



## TNAPPKIT

|         |                            |
|---------|----------------------------|
| MD1060  | LED Continuity Tester      |
| MD106   | Non-Contact Voltage Stick  |
| 211202  | Linesman Pliers 200mm      |
| 101918  | Screwdriver 125x5.5mm Slot |
| 101920  | Screwdriver 150x6.5mm Slot |
| 101942  | Screwdriver 80x PH1        |
| 101944  | Screwdriver 100x PH2       |
| 102554  | Screwdriver 100x Square    |
| EKPZ    | Kneepads                   |
| E4000   | Clear Safety Glasses       |
| E4004   | Bronze Safety Glasses      |
| E-MAX33 | Foldable Earmuffs          |
| 13-4HFR | Work Gloves                |
| TNCAP   | Camo Cap                   |
| BEANIE  | Beanie                     |
| TOOLBOX | Apprentice Toolbox         |

**\$332.22+GST**

## TNAPPKITADV

|         |                                      |
|---------|--------------------------------------|
| MD1160  | Two Pole Voltage & Continuity Tester |
| MD106   | Non-Contact Voltage Stick            |
| 211202  | Linesman Pliers 200mm                |
| 211219  | Side Cutters 200mm                   |
| 211208  | Long Nose Pliers 200mm               |
| 101918  | Screwdriver 125x5.5mm Slot           |
| 101920  | Screwdriver 150x6.5mm Slot           |
| 101942  | Screwdriver 80x PH1                  |
| 101944  | Screwdriver 100x PH2                 |
| 102554  | Screwdriver 100x Square              |
| EKPZ    | Kneepads                             |
| E4000   | Clear Safety Glasses                 |
| E4004   | Bronze Safety Glasses                |
| E-MAX33 | Foldable Earmuffs                    |
| 13-4HFR | Work Gloves                          |
| TNCAP   | Camo Cap                             |
| BEANIE  | Beanie                               |
| TOOLBOX | Apprentice Toolbox                   |

**\$396.60+GST**

# YOU CHOOSE

# TEST & MEASUREMENT DEALS



The MD9030 has been designed for use both in the laboratories and in the harsh industrial maintenance and repair sector. TRMS functionality makes it suitable for many applications while the bright backlit screen makes it ideal for working in dark areas.

## KEY FEATURES

- Accurate readings on sinusoidal and non-sinusoidal signals
- Measures temperature up to 300 °C and 572 °F
- Frequency measurement up to 1 MHz
- Incorrect lead connection alert
- Auto-ranging
- Relative zero
- Data hold & MAX hold
- CAT IV/300V, CAT III/600V & CAT II/ 1000 V overvoltage protection
- 3-3/4 digits, 4000 count backlit LCD display

## MEASURING FUNCTIONS

- TRMS AC, DC voltage & current measurements
- Capacitance measurement
- Resistance measurement
- Diode test
- Frequency measurement
- Continuity test (acoustic signalling)
- Temperature measurement



## MD9030 TRMS DIGITAL MULTIMETER



## FLUKE-376FC

True RMS AC/DC Clamp Meter with iFlex

The Fluke 376FC is an advanced troubleshooting tool for industrial and commercial electricians. It enables you to log, trend and monitor measurements remotely while keeping a safe distance from the arc flash zone.

### Key Features

- Remotely pinpoint intermittent faults via Fluke Connect®
- Inrush measurement to filter out noise & capture motor starting current
- AC/DC current to 1000A & AC current to 2500 A with iFlex current probe (included)
- Integrated VFD low pass filter
- Troubleshoot problems safely & efficiently
- CAT IV 600 V, CAT III 1000 V safety rating
- Flexible current probe provides access to large conductors in tight spaces
- Frequency measurement to 500 Hz
- Resistance measurement to 60 kΩ with continuity detection
- Min, max, average, & inrush recording to capture variations automatically
- 500 mV dc measurement range
- 1000 µF capacitance measurement

**\$1019.00 + GST**

## MD9226 AC/DC 600A TRMS CURRENT CLAMP



The MD9226 has a wide range of extra features, including peak value, data and MAX hold functions, auto power off, auto-ranging and a relative zero function.

### KEY FEATURES

- Auto-ranging
- Automatic, non-contact detection of electromagnetic fields to locate and trace live conductors
- Data hold function
- MIN/MAX/AVG function
- Peak value
- Relative zero
- 35mm jaw opening
- CAT IV / 300 V, CAT III / 600 V overvoltage categories

- LCD backlit display, 3-5/6 digit, 6000 count

### MEASURING FUNCTIONS

- DC and TRMS AC voltage up to 600 V, current measurement up to 600 A
- Resistance, frequency & capacitance measurements
- Acoustic continuity test
- Diode test

**MD9030 + MD9226  
COMBO DEAL  
\$599.00 + GST**



Ph 0800 442 182  
+64 9 274 3340

sales@transnet.co.nz

www.transnet.co.nz





# FREE GIFT WITH PURCHASE

## Special Tool Deals This Month



**Auckland**  
 78 Cryers Road  
 East Tamaki  
 Auckland  
 NEW ZEALAND  
 Ph 0800 442 182  
 Fax 0800 442 183  
 PO Box 39 383  
 Howick, Auckland

**Wellington**  
 10 Petone Ave  
 Petone  
 Wellington  
 NEW ZEALAND  
 Ph 04 576 2530  
 Fax 04 576 0040  
 PO Box 39 383  
 Howick, Auckland  
 NEW ZEALAND  
 sales@transnet.co.nz

**TransNet Tonga**  
**Nuku'alofa**  
 Lakalakaimonu Multi Utility  
 Complex  
 Taufua'ahau Road  
 Poutaha  
 Nuku'alofa  
 TONGA  
 Ph +67 627 939  
 Fax +67 627 976  
 PO Box 2932  
 Nuku'alofa  
 TONGA  
 transnet@kalianet.to



### HAND OPERATED MECHANICAL LEVER TOOLS

These mechanical lever tools are suitable for Copper lugs and links (CG and CK series), and feature built in, selectable crimp die sets for a range of lug and link sizes.



**WITH FREE TOOLBOX**



| Cat No. | Range (mm <sup>2</sup> ) | Crimp Type | Length (mm) | Weight (kg) |
|---------|--------------------------|------------|-------------|-------------|
| #21/1   | 6-50                     | HEXAGONAL  | 410         | 1.4         |
| #22/1   | 6-120                    | HEXAGONAL  | 670         | 3.9         |



### PARROT BEAK CUTTERS

These parrot beak style cable cutters are used for Copper and Aluminium conductors, with replacement blades available. Not for use with steel core conductors.



| Cat No. | Range (mm <sup>2</sup> ) | Length (mm) | Weight (kg) |
|---------|--------------------------|-------------|-------------|
| #140/1  | UP TO 240                | 610         | 1.8         |
| #141/1  | UP TO 500                | 805         | 2.8         |



**WITH FREE CONDUIT CUTTER**

TransNet NZ Ltd has made every reasonable effort to ensure the accuracy of this information and it is to the best of our knowledge correct and reliable. Under no circumstances does this constitute an assurance of any particular quality or performance and users should independently evaluate the suitability of products for their desired application. All information in this publication including pricing, drawings, illustrations, images and graphic designs are reflections of our current understanding. TransNet NZ Ltd reserves the right to make any adjustment to this information at any time. Our liability for the products outlined in this publication is set forth in our standard terms and conditions of trade. In case of any potential ambiguities or questions, please contact us for clarification.